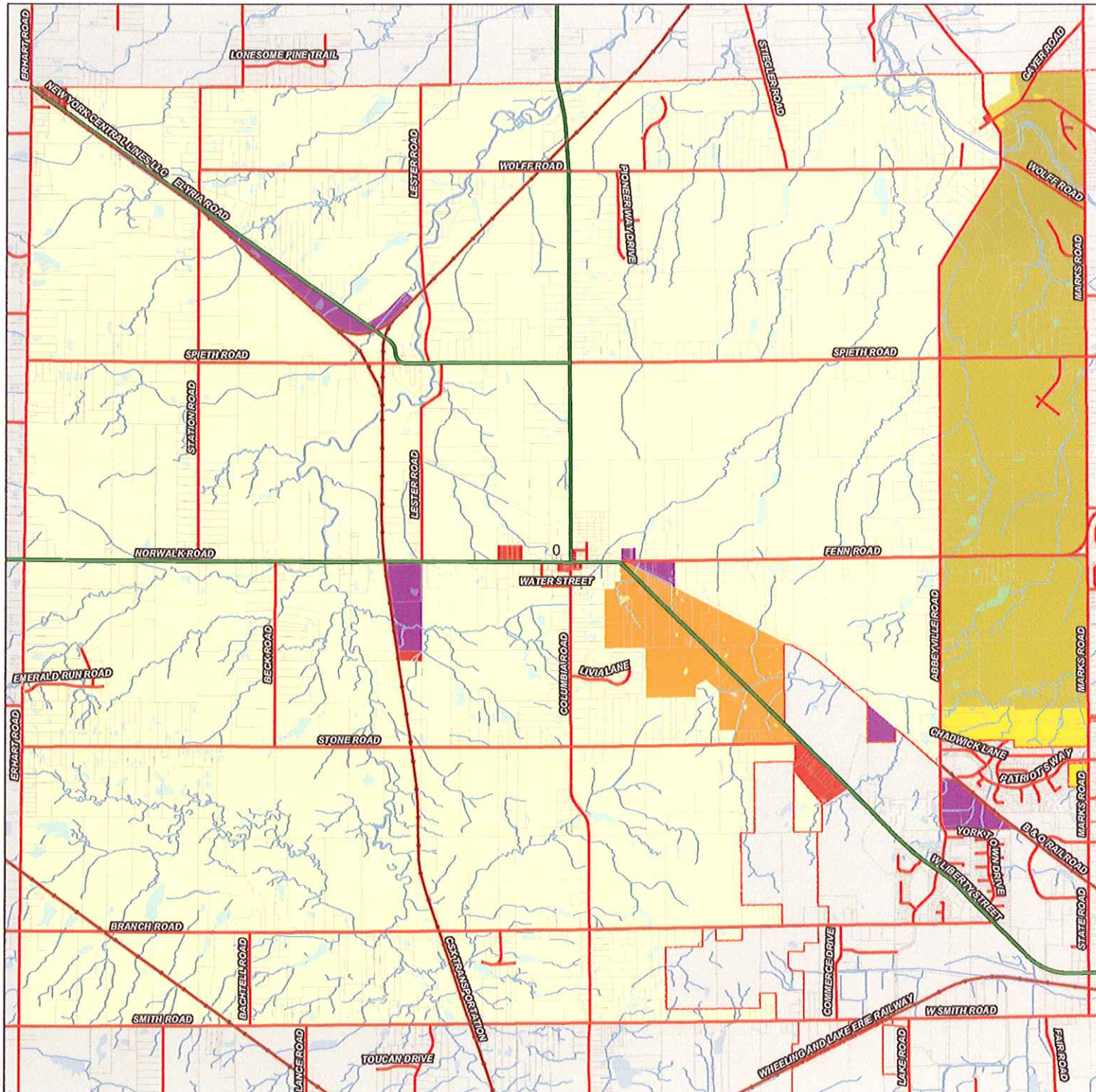
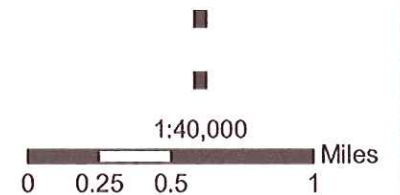


York Township Zoning Districts

17 April 2006



- Railroad
- Interstate Highway
- State Route
- C-1
- I-1
- M-U
- R-1
- R-1/PUD
- R-2
- Streams
- Lakes



The road centerline, railroad centerline, and parcel boundary data is maintained by the Medina County Highway Engineers Office.

The York Township zoning district data is maintained by the Medina County Department of Planning Services in cooperation with the York Township Trustees and the Zoning Office.